



AI IN TRIBAL EDUCATION:

BUILDING CONFIDENCE, CAPACITY, AND SOVEREIGNTY IN THE AGE OF INNOVATION

Welcome

Let's Ground Ourselves



Help us get to know our community,
scan the QR code to share

8645 3027



Brooke Curleyhair, M.Ed

Director, Indigenous Leadership Academy & Ed Policy
American Indian Policy Institute, ASU



Emile Eich, M.S.

Senior Data Analyst,
American Indian Policy Institute



Morgan Gray, J.D.

Senior Research & Policy Analyst,
American Indian Policy Institute

Agenda Overview

Welcome & Intention Setting

- Alignment to AIPI and Tribal Nation

Understanding AI

- AI in Context
- Thinking about AI

Putting AI to Work

- Practical Applications
- Prompt Writing
- Safety and Ethics

Guiding Principles

- Policy & Guidance

Closing Reflection & Discussion

Welcome & Intention Setting

ASU Charter

ASU is a comprehensive public research university, measured not by whom it excludes, but by whom it **includes and how they succeed;** advancing research and discovery of public value; and assuming fundamental responsibility for the economic, social, cultural and overall health of the communities it serves.

American Indian Policy Institute

We support Tribal sovereignty through **examination, exploration, and elevation** of issues impacting communities and American Indian and Alaska Native peoples.

Policy Explainer Higher Ed Role

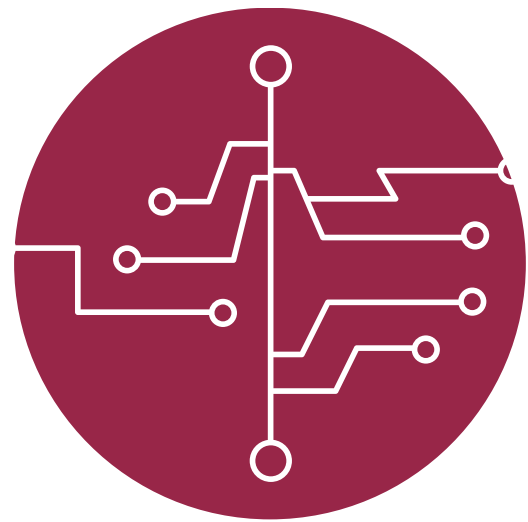
ASU's commitment to Tribal Nations and the Federal Trust Responsibility.

SCAN



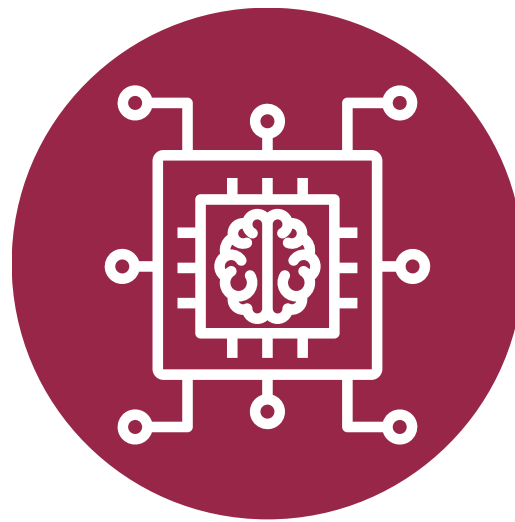
Understanding AI

Learning Patterns, Not Wisdom



Patterns

AI mimics how patterns repeat but does not “think” or “know”



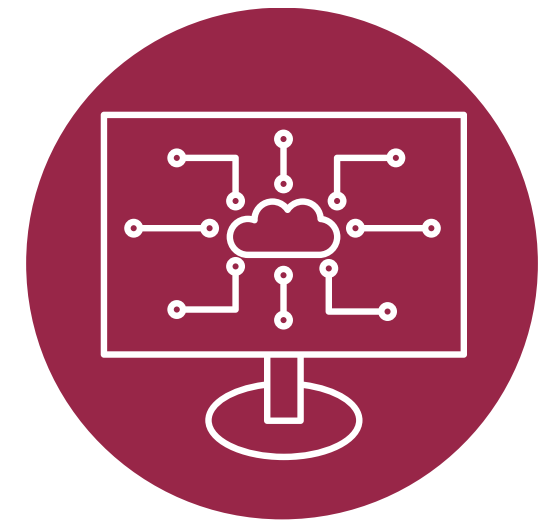
Correlations

AI learns correlations, not meanings, such as noticing that certain words or shapes often appear together.



Predictions

The more data AI sees, the better it gets at predicting the next likely pattern



Hallucinations

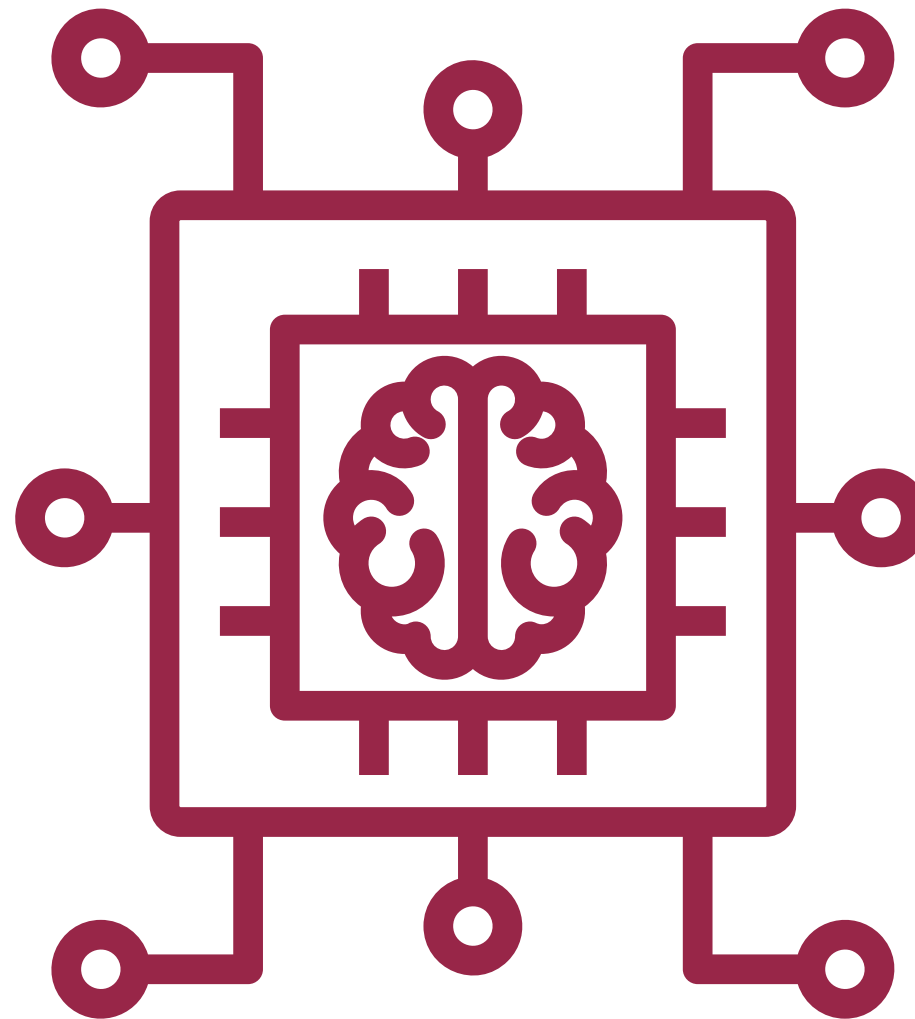
Sometimes AI fills gaps by creating information that sounds real but isn't based on facts.

Understanding AI

Thinking About AI

“Smart Assistant”

- Think of AI as a **tool**, not a truth-teller.
- Like a smart assistant, it helps but should **never** replace human judgment.
- AI **reflects** the data it’s trained on, including biases and gaps.
- Accuracy isn’t guaranteed, so **verify and use with care**.



Guiding Principles

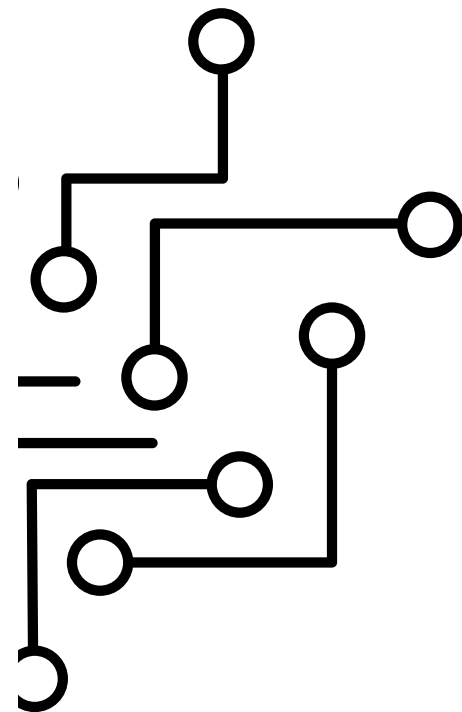
- **You decide** how and when AI should be used.
- **Control and consent matter**, AI should serve your community, not shape it.
- **Data sovereignty** and privacy are essential; Tribal nations set their own boundaries.

Putting AI to Work

Practical Applications

AI “Smart Assistant”

A helpful tool for organizing, creating, and imagining while keeping people, culture, and sovereignty at the heart.



Summarizer

- Unpack large documents (policy briefs, executive orders, research).
- Translate complex info into clear, actionable summaries.

Planner

- Organize project tasks and create checklists or timelines.
- Draft strategic plans or reports with key milestones.

Brainstorm & Outline

- Draft outlines for programs, workshops, or community events.

Meeting Organizer

- Create meeting agendas and capture action items or notes.
- Summarize key points for follow-up or documentation.

Educator Support

- Draft lesson plans with learning objectives and standards alignment.
- Build learning materials or discussion prompts for students.

Putting AI to Work

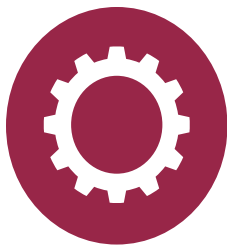
Prompt Writing

User Prompt:

Active Prompting



Why use it: To co-create a clear and detailed output through guided conversation



How it works: Ask stepwise questions, review the AI's response, and continue to refine as you go

Start Broad

“Act as a Tribal education policy advisor. List the **main themes** in this document related to education governance and funding. [LINK]”

Narrow the Focus

“For each theme listed, write **one short sentence** explaining how it could **benefit or challenge Tribal education programs**”

Refine for Audience

“Summarize your finding into **3 talking points** for a council meeting. **Use clear and non-technical language.**”

Putting AI to Work

Safety and Ethics in AI Use



Verify What AI Says

Review AI outputs for **cultural respect and accuracy**.

Ask for citations: “Quote the paragraph or line that supports this claim.”

Check for bias or hallucination: “Is any part uncertain? Mark ‘UNCERTAIN’ and explain why.”



Protect Sensitive Information

Before using a generative AI tool, ask yourself:

- What information am I submitting?
- Could it include sensitive Tribal or personal data?



Use AI Responsibly

Use platforms that **honor Indigenous data principles**.

Treat AI as a **support tool**, not an authority.

Apply **critical thinking** - you are responsible for final decisions

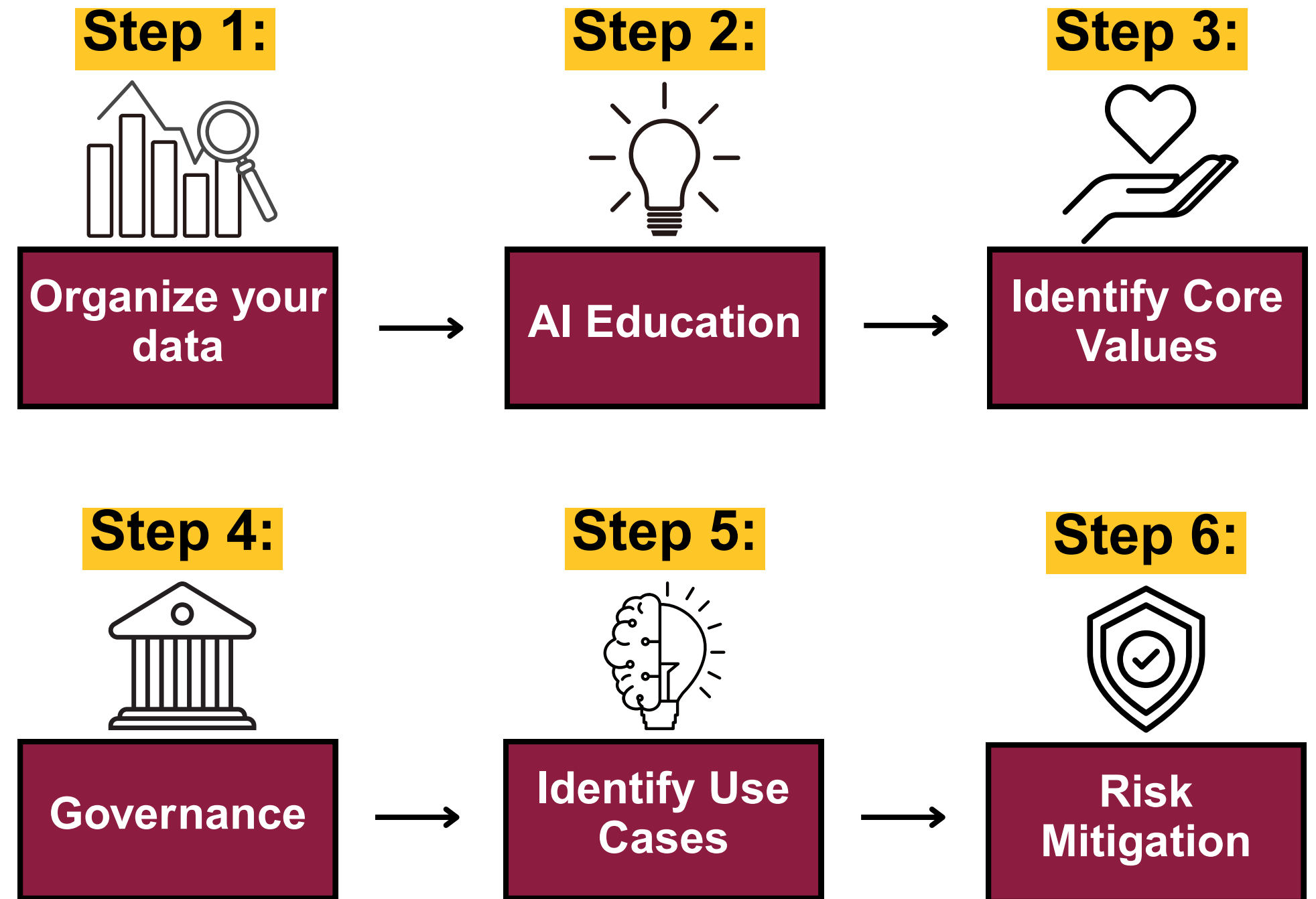
Guiding Principles

Policy and Guidance

Rules, Regulations, and Authorities

- No federal laws regulate AI use - but states may have their own rules and regulations
- America's AI Action Plan
- White House public comment period on existing policies that hinder AI development
- Tribal-specific authorities: Cherokee Nation example

Building an AI Strategy: Considerations



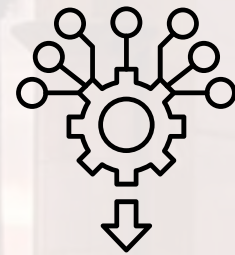
Closing Reflection & Discussion

Building AI Confidence, Capacity, and Sovereignty



Build Confidence with AI

What would help you feel more confident using AI in your TED/TEA work?
What kinds of training or tools would be most helpful for your team or community?



Grow Capacity through Innovation

How might AI support your department's daily work (from management to student success)?
What's one small next step you can take after today's session?



Advance Sovereignty and Self-Determination

How can TED/TEA guide AI adoption in ways that protect data sovereignty and cultural integrity?
What values or protocols could shape ethical, community-led use of AI?

Thank You

Stay Connected!



**We want to hear from you,
scan the QR code to share**

ASU **American Indian
Policy Institute**
Arizona State University

Sandra Day O'Connor College of Law

Beaus Center for Law and Society

 111 E. Taylor St. Phoenix, AZ 85004

 aipi.asu.edu

 [@aipinstitute](https://www.facebook.com/aipinstitute)